



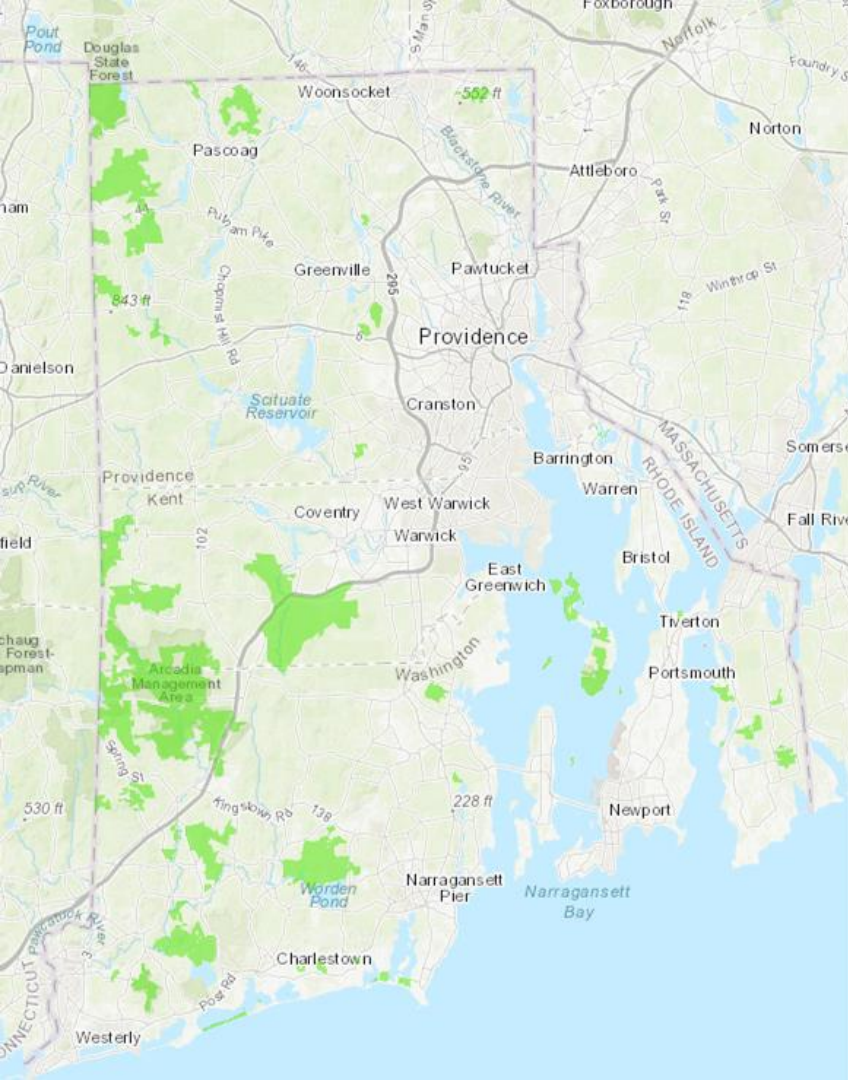




# Our Mission: Protect, Restore, Manage







# State Management Areas

- Open to the public
- Open to hunting and fishing
- Fluorescent orange requirements
- September - May
- Dogs allowed
- **Preserved for wildlife habitat**

# Hunting: Regulated & Sustainable

- Management
- Data
- Funding
- Sustainability





# The history of Rhode Island's bears...



**Before European  
settlement**



**After European  
settlement**

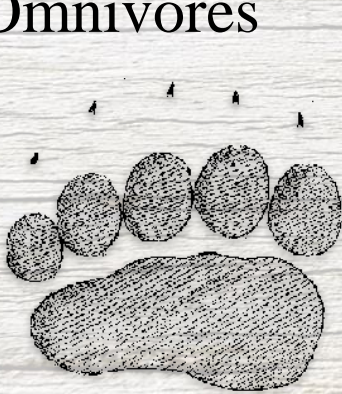
- ❖ Habitat loss
- ❖ Overhunting
- ❖ Angry farmers

\*Bears were probably wiped out in Rhode Island before the year 1800.



# Black Bear Basics

- ❖ Males: 150-450 pounds
- ❖ Females: 100-250 pounds
- ❖ Can vary in color, based on geographic location
- ❖ Prefer forested habitat
- ❖ Omnivores



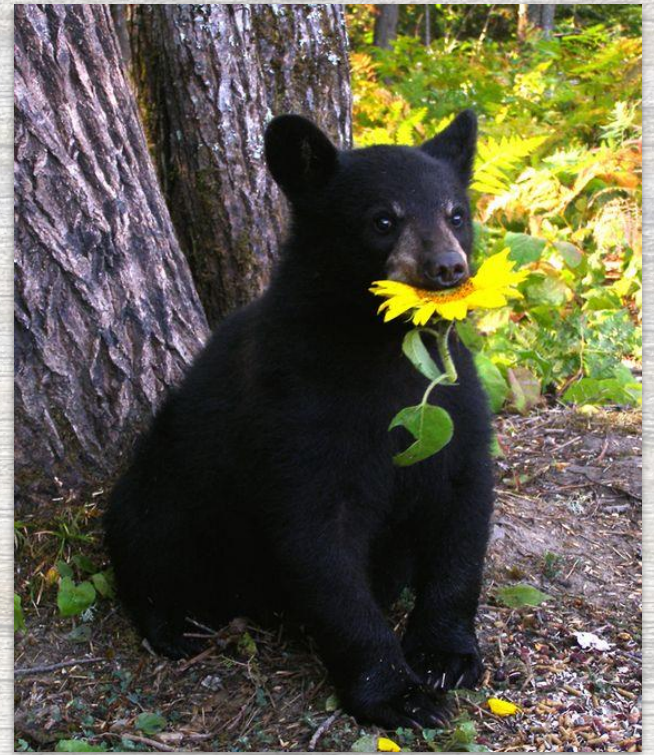


# Black Bear Basics

- ❖ Sexually mature at 3-4 years old
- ❖ Lifespan → Around 10 years
- ❖ Do not truly hibernate
- ❖ Home range size
  - Males → 12-60 square miles
  - Females → 5-7 square miles







**Natural diet is high in carbs,  
low in protein and fat.**



# Bear Scat





# Horse Scat





# Breeding

JANUARY							FEBRUARY							MARCH							APRIL							
SUN	MON	TUE	WED	THU	FRI	SAT	SUN	MON	TUE	WED	THU	FRI	SAT	SUN	MON	TUE	WED	THU	FRI	SAT	SUN	MON	TUE	WED	THU	FRI	SAT	
		1	2	3	4	5						1	2									1	2	3	4	5	6	
6	7	8	9	10	11	12	3	4	5	6	7	8	9	3	4	5	6	7	8	9	7	8	9	10	11	12	13	
13	14	15	16	17	18	19	10	11	12	13	14	15	16	10	11	12	13	14	15	16	14	15	16	17	18	19	20	
20	21	22	23	24	25	26	17	18	19	20	21	22	23	17	18	19	20	21	22	23	21	22	23	24	25	26	27	
27	28	29	30	31			24	25	26	27	28			24	25	26	27	28	29	30	28	29	30					
MAY							JUNE							JULY							AUGUST							
SUN	MON	TUE	WED	THU	FRI	SAT	SUN	MON	TUE	WED	THU	FRI	SAT	SUN	MON	TUE	WED	THU	FRI	SAT	SUN	MON	TUE	WED	THU	FRI	SAT	
		1	2	3	4								1													1	2	3
5	6	7	8	9	10	11	2	3	4	5	6	7	8	7	8	9	10	11	12	13	4	5	6	7	8	9	10	
12	13	14	15	16	17	18	9	10	11	12	13	14	15	14	15	16	17	18	19	20	11	12	13	14	15	16	17	
19	20	21	22	23	24	25	16	17	18	19	20	21	22	21	22	23	24	25	26	27	18	19	20	21	22	23	24	
26	27	28	29	30	31		23	24	25	26	27	28	29	28	29	30	31				25	26	27	28	29	30	31	
							30																					
SEPTEMBER							OCTOBER							NOVEMBER							DECEMBER							
SUN	MON	TUE	WED	THU	FRI	SAT	SUN	MON	TUE	WED	THU	FRI	SAT	SUN	MON	TUE	WED	THU	FRI	SAT	SUN	MON	TUE	WED	THU	FRI	SAT	
1	2	3	4	5	6	7							1	2												1	2	
8	9	10	11	12	13	14	1	2	3	4	5			3	4	5	6	7	8	9	8	9	10	11	12	13	14	
15	16	17	18	19	20	21	6	7	8	9	10	11	12	10	11	12	13	14	15	16	15	16	17	18	19	20	21	
22	23	24	25	26	27	28	13	14	15	16	17	18	19	17	18	19	20	21	22	23	22	23	24	25	26	27	28	
29	30						20	21	22	23	24	25	26	24	25	26	27	28	29	30	29	30	31					
							27	28	29	30	31			27	28	29	30											

**Breeding Season**      **Cubs Born**





Newborns weigh  $< 1$  lb.  
Weaned at 7 months



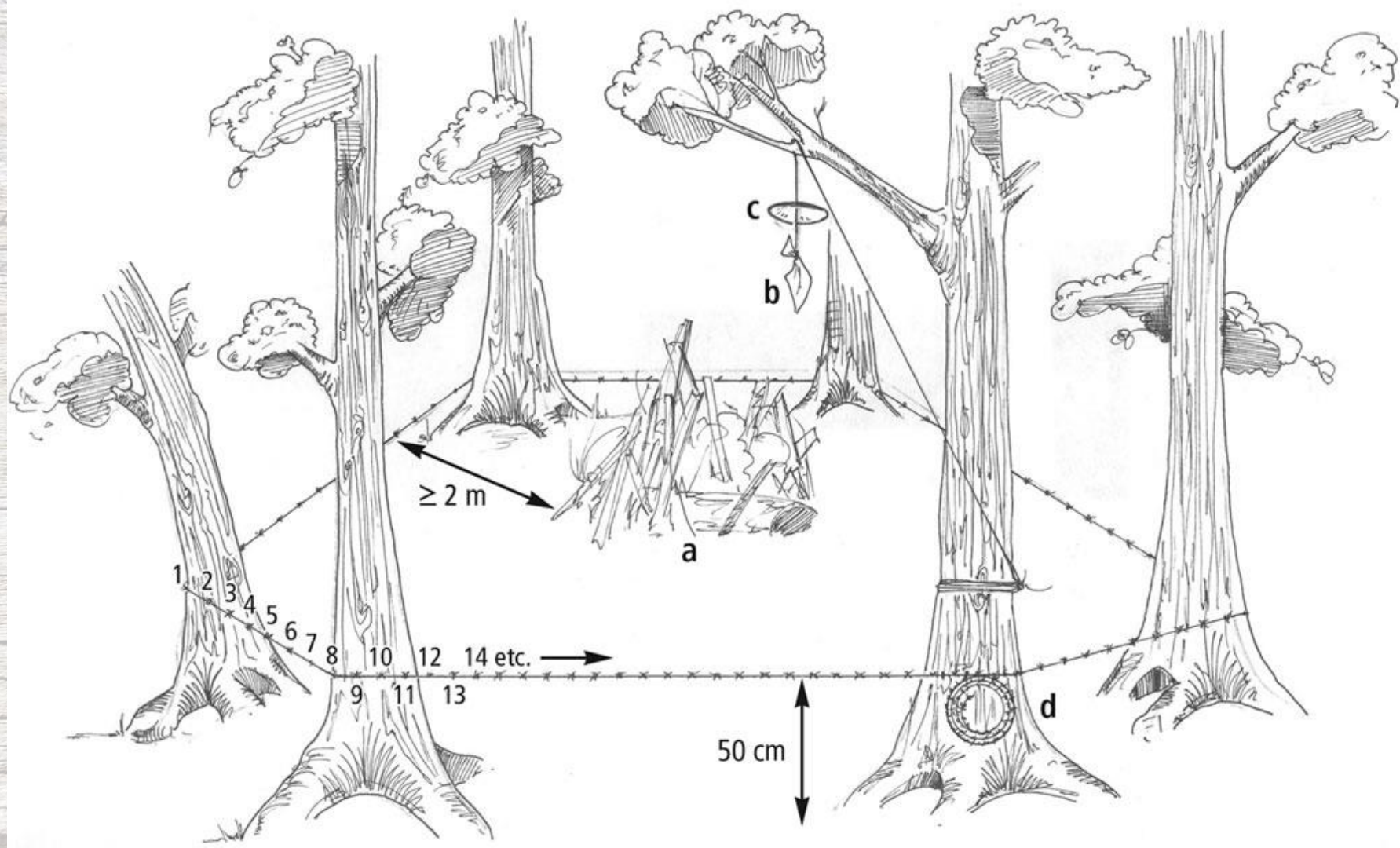
Cubs stay with mom for  
a year and a half!



# Bear Hair Snares (say that 3 times fast!)











## Scent lure flavor menu:

- ❖ Anise
- ❖ Fish oil
- ❖ Caramel
- ❖ Blueberry
- ❖ Jelly Donut
- ❖ “Black Magic”  
mystery scent



**Why not just bait hair snares with real jelly donuts?**



# Caught on camera!



M OS20

51°F 10°C ●

07-11-2018 05:13:22



# Caught on camera!



M OS20

51°F 10°C ●

07-11-2018 05:13:24



# Caught on camera!



Ⓜ OS20

51°F 10°C ●

07-11-2018 05:13:41



# DEM-URI Trail Cam Study



MS05

30°F - 1°C

01-31-2020 13:47:18



# DEM-URI Trail Cam Study



M OS05

33°F 0°C

01-31-2020 13:50:25



# DEM-URI Trail Cam Study



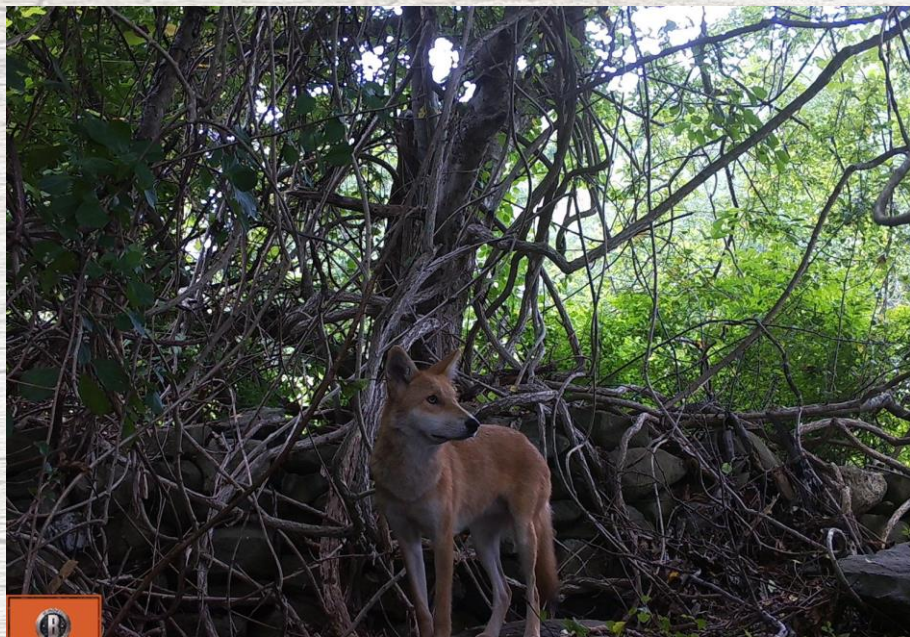
M OS05

33°F 0°C

01-31-2020 13:50:54



# DEM-URI Trail Cam Study



Bushnell

MOS21

51°F 10°C

08-17-2019 16:26:32



Bushnell

MOS22

28°F -2°C

11-18-2018 13:02:37



# DEM-URI Trail Cam Study





# Living with bears...



- ❖ Secure trash
- ❖ Put up bird feeders in November, remove by April 1
- ❖ Don't compost fatty / oily items
- ❖ Bears can be scared away by loud noises
- ❖ **DO NOT FEED BEARS OR**





**GIVE ME ALL YOUR**



**PIC-A-NIC BASKETS**





# Translocation - Pros and Cons

- ❖ Pros → Non-lethal, accepted by the public
- ❖ Cons → Bears travel more, hit by cars, come into conflict with people
- ❖ Not a significant increase in mortality
- ❖ Short term effect on reproduction for females
- ❖ Young bears generally do better



**Illegal to relocate wildlife in RI → Bears are the exception, and actions decided on a case by case basis**



# Bear Management - Habitat

- ❖ Need diversity of forest
  - Forest openings for foraging
  - Den sites
  - Hard mast production (oak, hickory, beech)
  
- ❖ Fragmentation is a HUGE issue for small populations
  - Think about corridors

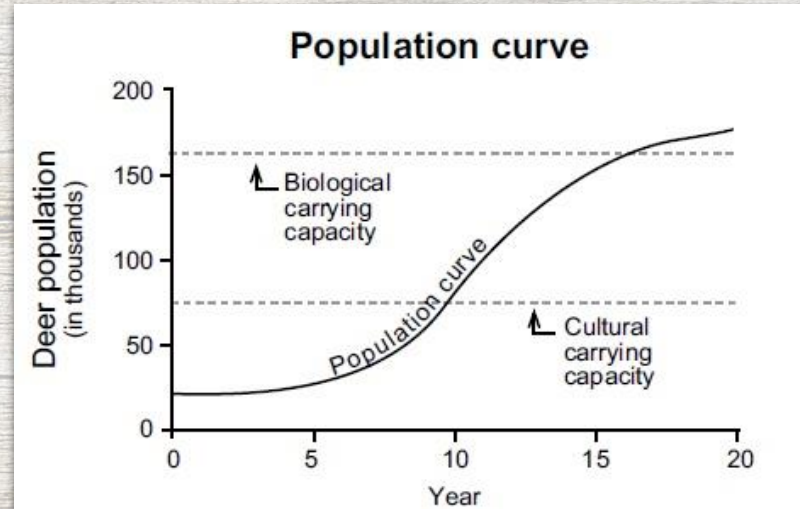




# Bear Management - Coexistence



- ❖ Goals → maintain sustainable population, increase hunting/viewing opportunities, minimize human-bear conflict
- ❖ Aligning hunting season to coincide with bear damage periods can actually save bears
- ❖ Biological vs. Cultural carrying capacity





# Questions?



**Mary Gannon**

*Wildlife Outreach Coordinator*

*RIDEM Division of Fish and Wildlife*

[mary.gannon@dem.ri.gov](mailto:mary.gannon@dem.ri.gov)

## Connect with us!



RI.fishandwildlife



RIFishwildlife

Join our monthly email list  
for updates on future  
events!

[dem.ri.gov/wildlifeoutreach](http://dem.ri.gov/wildlifeoutreach)